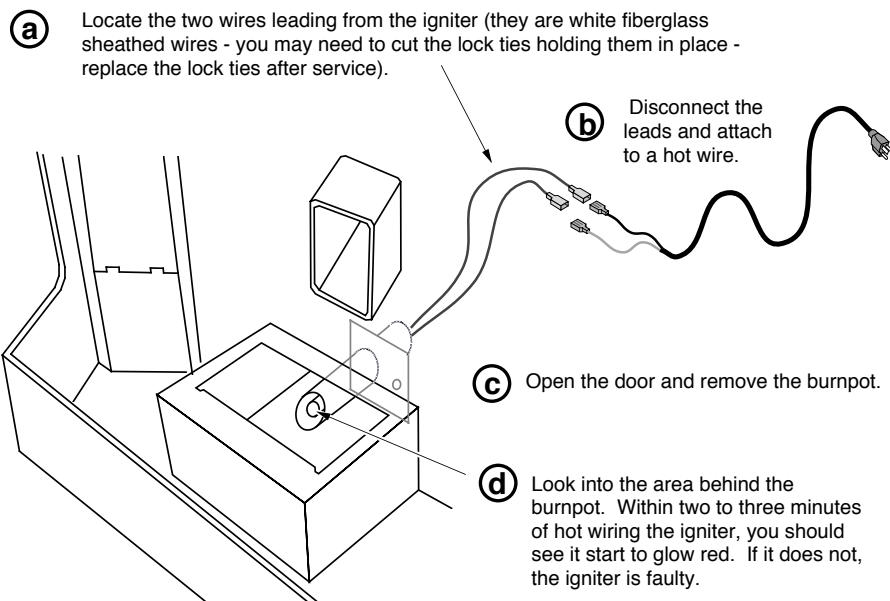


Faulty Igniter

During the start-up sequence the igniter receives electricity for 10 minutes under normal circumstances. To check the igniter, access the right side of the stove and connect a hot wire to the two igniter leads.



Make sure the stove has fully cooled (approximately 25 minutes) before conducting service. Unplug the stove to prevent electrical shock.



If the igniter does glow red, the igniter is functional. Next, check the wires leading to the igniter.

